



Recombinant Synaptophysin (Neuroendocrine Marker); Clone SYP/4503R (Concentrate)

| | | |
|-------------------------------|----------------------|----------------------|
| Availability/Contents: | <u>Item #</u> | <u>Volume</u> |
| | RA0677-C.1 | 0.1 ml |
| | RA0677-C.5 | 0.5 ml |
| | RA0677-C1 | 1 ml |

Description:

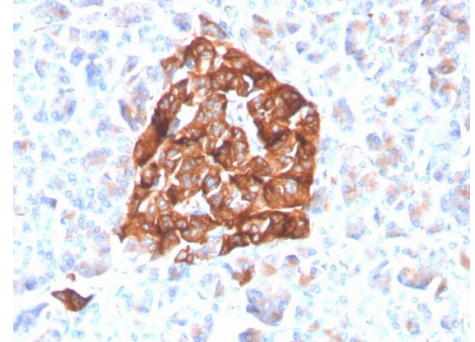
| | |
|--------------------------|--|
| Species: | Rabbit |
| Immunogen: | Recombinant fragment (around aa 224-313) of human Synaptophysin (SYP) protein (exact sequence is proprietary) |
| Clone: | SYP/4503R |
| Isotype: | IgG / Kappa |
| Entrez Gene ID: | 6855 |
| Hu Chromosome Loc.: | Xp11.23 |
| Synonyms: | Synaptophysin, Major synaptic vesicle protein p38, Major synaptic vesicle protein p38; MRX96; MRXSYP; Syn p38; Syp; SYPH |
| Mol. Weight of Antigen: | 38kDa |
| Format: | 200ug/ml of antibody purified from Bioreactor Concentrate by Protein A/G. Prepared in 10mM PBS with 0.05% BSA & 0.05% azide. |
| Specificity: | This recombinant rabbit monoclonal antibody recognizes a protein of 38kDa that is identified as synaptophysin. |
| Background: | It is an N-glycosylated integral membrane protein found in neurons and endocrine cells. Synaptophysin contains four transmembrane domains and may function as a gap junction-like channel. This antibody identifies normal neuroendocrine cells and neuroendocrine neoplasms. Diffuse, finely granular, cytoplasmic staining is observed, which probably correlates with the distribution of the antigen within neurosecretory vesicles. Synaptophysin is an independent, broad-range marker of neural and neuroendocrine differentiation. |
| Species Reactivity: | Human |
| Positive Control: | Cerebellum or Pheochromocytoma., HeLa or Y79 cells. Human pancreas, HePG2 |
| Cellular Localization: | Cell junction, Cytoplasmic vesicle, Secretory vesicle, Synapse, Synaptic vesicle membrane, Synaptosome |
| Titer/ Working Dilution: | Immunohistochemistry (Frozen and Formalin-fixed): 1-2 µg/ml |
| Microbiological State: | This product is not sterile. |

Storage: 2° C  8° C



ScyTek Laboratories, Inc.
205 South 600 West
Logan, UT 84321
U.S.A.

Uses/Limitations: Not to be taken internally.
For Research Use Only.
This product is intended for qualitative immunohistochemistry with normal and neoplastic formalin-fixed, paraffin-embedded tissue sections, to be viewed by light microscopy.
Do not use if reagent becomes cloudy.
Do not use past expiration date.
Non-Sterile.



Formalin-fixed, paraffin-embedded human pancreas stained with Synaptophysin Recombinant Rabbit Monoclonal Antibody (SYP/4503R).

Ordering Information and Current Pricing at www.scytek.com

Procedure:

1. **Tissue Section Pretreatment (Highly Recommended):** Staining of formalin fixed, paraffin embedded tissue sections is significantly enhanced by pretreatment with Tris-EDTA HIER Solution (10x) pH 9.0 (ScyTek catalog# TES500) or Citrate Plus (10x) HIER Solution (ScyTek catalog# CPL500).
2. **Primary Antibody Incubation Time:** We suggest an incubation period of 30 minutes at room temperature. However, depending upon the fixation conditions and the staining system employed, optimal incubation should be determined by the user.
3. **Visualization:** For maximum staining intensity we recommend the “UltraTek HRP Anti-Polyvalent Lab Pack” (ScyTek catalog# UHP125, see IFU for instructions) combined with the “DAB Chromogen/Substrate Bulk Pack (High Contrast)” (ScyTek catalog# ACV500, see IFU for instructions).


Precautions: Contains Sodium Azide as a preservative (0.09% w/v).
Do not pipette by mouth.
Avoid contact of reagents and specimens with skin and mucous membranes.
Avoid microbial contamination of reagents or increased nonspecific staining may occur.
This product contains no hazardous material at a reportable concentration according to U.S. 29 CFR 1910.1200, OSHA Hazardous Communication Standard and EC Directive 91/155/EC.


References:

1. Wiedenmann B, et al. Identification and localization of synaptophysin, an integral membrane glycoprotein of Mr 38,000 characteristic of presynaptic vesicles. Cell. 1985; 41:1017-28

Warranty:

No products or “Instructions For Use (IFU)” are to be construed as a recommendation for use in violation of any patents. We make no representations, warranties or assurances as to the accuracy or completeness of information provided on our IFU or website. Our warranty is limited to the actual price paid for the product. ScyTek Laboratories, Inc. is not liable for any property damage, personal injury, time or effort or economic loss caused by our products. Immunohistochemistry is a complex technique involving both histological and immunological detection methods. Tissue processing and handling prior to immunostaining can cause inconsistent results. Variations in fixation and embedding or the inherent nature of the tissue specimen may cause variations in results. Endogenous peroxidase activity or pseudoperoxidase activity in erythrocytes and endogenous biotin may cause non-specific staining depending on detection system used.

Storage: 2° C  8° C

 ScyTek Laboratories, Inc.
205 South 600 West
Logan, UT 84321
U.S.A.