



# Recombinant Cytokeratin, Multi (Epithelial Marker); Clone KRT/1877R (Concentrate)

<b>Availability/Contents:</b>	<u><b>Item #</b></u>	<u><b>Volume</b></u>
	RA0663-C.1	0.1 ml
	RA0663-C.5	0.5 ml
	RA0663-C1	1 ml

**Description:**

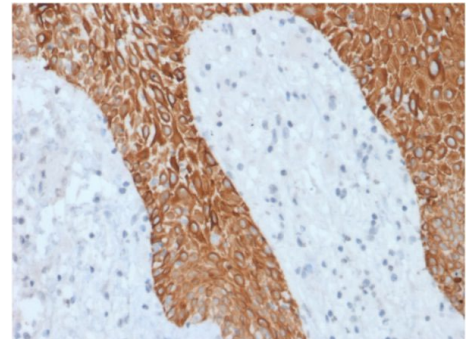
Species:	Rabbit
Immunogen:	Keratin-enriched preparation from cultured human epithelial cells
Clone:	KRT/1877R
Isotype:	IgG / Kappa
Entrez Gene ID:	3851; 3852; 3853; 3854; 286887; 3856; 3858; 3860; 3875
Hu Chromosome Loc.:	Multiple
Synonyms:	Keratin, type II cytoskeletal 6A, Cytokeratin-6A, Cytokeratin-6D, Keratin-6A, Type-II keratin Kb6
Mol. Weight of Antigen:	Multiple
Format:	200ug/ml of antibody purified from Bioreactor Concentrate by Protein A/G. Prepared in 10mM PBS with 0.05% BSA & 0.05% azide.
Specificity:	This antibody recognizes acidic (Type I or LMW) and basic (Type II or HMW) cytokeratins, including 59kDa (CK4); 58kDa (CK5); 56kDa (CK6); 52kDa (CK8); 56.5kDa (CK10); 53kDa (CK13) and 45kDa (CK18).
Background:	Twenty human keratins are resolved with two-dimensional gel electrophoresis into acidic (pI 6.0) subfamilies. This is a broad-spectrum antibody, which has been reported to differentiate epithelial tumors from non-epithelial tumors. Many studies have shown the usefulness of keratins as markers in cancer research and tumor diagnosis.
Species Reactivity:	Cow, Frog, Goat, Guinea Pig, Human, Monkey, Mouse, Pig, Rat
Positive Control:	A431 cells, Colon carcinoma., Skin
Cellular Localization:	Cytoplasmic
Titer/ Working Dilution:	Immunohistochemistry (Frozen and Formalin-fixed): 1-2 µg/ml Flow Cytometry: 1-2 µg/million cells Immunofluorescence: 1-3 µg/ml Western Blotting: 2-4 µg/ml
Microbiological State:	This product is not sterile.

Storage: 2° C  8° C



ScyTek Laboratories, Inc.  
205 South 600 West  
Logan, UT 84321  
U.S.A.

**Uses/Limitations:** Not to be taken internally.  
For Research Use Only.  
This product is intended for qualitative immunohistochemistry with normal and neoplastic formalin-fixed, paraffin-embedded tissue sections, to be viewed by light microscopy.  
Do not use if reagent becomes cloudy.  
Do not use past expiration date.  
Non-Sterile.



Formalin-fixed, paraffin-embedded human Skin stained with Multi-Cytokeratin Recombinant Rabbit Monoclonal Antibody (KRT/1877R).

**Ordering Information and Current Pricing at [www.scytek.com](http://www.scytek.com)**

**Procedure:**

- Tissue Section Pretreatment (Highly Recommended):** Staining of formalin fixed, paraffin embedded tissue sections is significantly enhanced by pretreatment with Tris-EDTA HIER Solution (10x) pH 9.0 (ScyTek catalog# TES500) or Citrate Plus (10x) HIER Solution (ScyTek catalog# CPL500).
- Primary Antibody Incubation Time:** We suggest an incubation period of 30 minutes at room temperature. However, depending upon the fixation conditions and the staining system employed, optimal incubation should be determined by the user.
- Visualization:** For maximum staining intensity we recommend the “UltraTek HRP Anti-Polyvalent Lab Pack” (ScyTek catalog# UHP125, see IFU for instructions) combined with the “DAB Chromogen/Substrate Bulk Pack (High Contrast)” (ScyTek catalog# ACV500, see IFU for instructions).


**Precautions:** Contains Sodium Azide as a preservative (0.09% w/v).  
Do not pipette by mouth.  
Avoid contact of reagents and specimens with skin and mucous membranes.  
Avoid microbial contamination of reagents or increased nonspecific staining may occur.  
This product contains no hazardous material at a reportable concentration according to U.S. 29 CFR 1910.1200, OSHA Hazardous Communication Standard and EC Directive 91/155/EC.


**References:**

- Bartek J et. al. J Pathol, 1991, 164(3):215-24
- Kasper M. Histochemistry, 1991, 95(6):613-20

**Warranty:**

No products or “Instructions For Use (IFU)” are to be construed as a recommendation for use in violation of any patents. We make no representations, warranties or assurances as to the accuracy or completeness of information provided on our IFU or website. Our warranty is limited to the actual price paid for the product. ScyTek Laboratories, Inc. is not liable for any property damage, personal injury, time or effort or economic loss caused by our products. Immunohistochemistry is a complex technique involving both histological and immunological detection methods. Tissue processing and handling prior to immunostaining can cause inconsistent results. Variations in fixation and embedding or the inherent nature of the tissue specimen may cause variations in results. Endogenous peroxidase activity or pseudoperoxidase activity in erythrocytes and endogenous biotin may cause non-specific staining depending on detection system used.

Storage: 2° C  8° C



ScyTek Laboratories, Inc.  
205 South 600 West  
Logan, UT 84321  
U.S.A.