

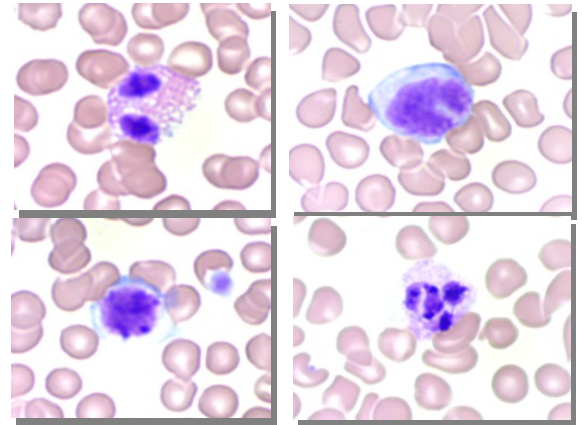
Quick-Dip Differential Stain Kit

Description: The Quick-Dip Differential Stain Kit provides three reagents for rapid staining of blood smears. Methanol is used to quickly fix smears, followed by differential staining with buffered xanthene and thiazine dyes.

Contents and Availability:

- 1) **Quick-Dip Fixative (QDF):** Dilute Triarylmethane dye in Methanol.
- 2) **Quick-Dip Solution 1 (QD1):** Aqueous phosphate buffered Xanthene dye. Contains preservative.
- 3) **Quick-Dip Solution 2 (QD2):** Aqueous phosphate buffered Thiazine dye. Contains preservative.

500ml Kit	<table border="0"> <tr> <td style="text-align: left;"><u>REF # QDK-1</u></td> <td style="text-align: left;"><u>Volume</u></td> </tr> <tr> <td>QDF500</td> <td>500 ml</td> </tr> <tr> <td>QD1500</td> <td>500 ml</td> </tr> <tr> <td>QD2500</td> <td>500 ml</td> </tr> </table>	<u>REF # QDK-1</u>	<u>Volume</u>	QDF500	500 ml	QD1500	500 ml	QD2500	500 ml
<u>REF # QDK-1</u>	<u>Volume</u>								
QDF500	500 ml								
QD1500	500 ml								
QD2500	500 ml								
Gallon Kit	<table border="0"> <tr> <td style="text-align: left;"><u>REF # QDK-GL</u></td> <td style="text-align: left;"><u>Volume</u></td> </tr> <tr> <td>QDF-3800</td> <td>1 Gallon</td> </tr> <tr> <td>QD1-3800</td> <td>1 Gallon</td> </tr> <tr> <td>QD2-3800</td> <td>1 Gallon</td> </tr> </table>	<u>REF # QDK-GL</u>	<u>Volume</u>	QDF-3800	1 Gallon	QD1-3800	1 Gallon	QD2-3800	1 Gallon
<u>REF # QDK-GL</u>	<u>Volume</u>								
QDF-3800	1 Gallon								
QD1-3800	1 Gallon								
QD2-3800	1 Gallon								



Uses/Limitations:

- Not to be taken internally.
- For Research Use only
- For professional use.
- Do not use past expiration date.
- Use caution when handling reagents.
- Non-Sterile.


Precautions:


- Avoid contact with skin and eyes.
- Harmful if swallowed.
- Follow all Federal, State, and local regulations regarding disposal.

Expected Results:

- Neutrophils:** Violet nuclei with dark violet granules and pink cytoplasmic granules
- Eosinophils:** Violet nuclei with dark violet granules and bright red cytoplasmic granules.
- Monocytes:** Violet nuclei with light blue cytoplasm.
- Lymphocytes:** Violet nuclei with dark violet granules and light blue cytoplasm.
- Basophils:** Violet nuclei with light blue cytoplasm.
- Erythrocytes:** Pink to yellowish-red.

Note: Suggested fixation may not be sufficient for fixation of Basophils giving an 'agranular' appearance. Increase fixation to improve basophil granule staining.

 Storage: 18° C  25° C



ScyTek Laboratories, Inc.
205 South 600 West
Logan, UT 84321
U.S.A.



EC REP
Emergo Europe
Prinsessegracht 20
2514 AP The Hague, The Netherlands

Procedure:


1. Prepare blood smear as usual and fix in Quick-Dip Fixative (QDF) by dipping into solution 5 times for 1 second each.
2. Stain in Quick-Dip Solution I (QD1) by dipping into solution 5 times for 1 second each.
3. Stain in Quick-Dip Solution II (QD2) by dipping into solution 5 times for 1 second each.
4. Rinse slide by dipping into deionized water (not provided) by dipping into solution 5 times for 1 second each.
5. Allow slide to air dry and examine under oil-immersion or clear and mount in synthetic resin.


Notes:

- Back of slide may be wiped between steps to reduce cross contamination.
- Do not allow stain to dry on slide between staining steps.
- Keep reagents tightly closed when not in use.
- Intensity of staining can be controlled by varying number of dips in each dye solution.
- Filter solutions as needed if precipitation occurs.
- Replace solutions if results differ from normal.

Bulk Reagent Ordering Information and Current Pricing at www.scytek.com

Description:	Catalog #	Volume
Quick-Dip Fixative	QDF500	500 ml
	QDF999	1000 ml
	QDF-3800	1 Gallon
Quick-Dip Solution 1	QD1500	500 ml
	QD1999	1000 ml
	QD1-3800	1 Gallon
Quick-Dip Solution 2	QD2500	500 ml
	QD2999	1000 ml
	QD2-3800	1 Gallon

 Storage: 18° C  25° C



ScyTek Laboratories, Inc.
 205 South 600 West
 Logan, UT 84321
 U.S.A.



EC REP

Emergo Europe
 Prinsessegracht 20
 2514 AP The Hague, The Netherlands