



Instructions For Use

MBS-IFU

205 South 600 West Logan, Utah 84323, U.S.A. – Tel. (800) 729-8350 – Tel. (435) 755-9848 – Fax (435) 755-0015 – www.scytek.com Rev. 4, 5/16/2024

Methylene Blue Solution

Description and Principle

Methylene Blue Solution has been optimized in our research laboratories to give outstanding results when used in various procedures such as the Ziehl-Neelsen, Fite's, and Gram stain. The stain is also suggested for use in staining a variety of bacteria (*Corynebacterium diphtheria*, *Haemophilus influenzae*, *Neisseria*, etc.) and leukocytes. This reagent produces dark blue nuclei with very light blue cytoplasm.

Expected Results

Nuclei:	Dark Blue
Cytoplasm:	Light Blue
<i>Corynebacterium Diphtheria</i> :	Blue Granules
<i>Escherichia Coli</i> :	Blue Rods
<i>Streptococcus Pyogenes</i> :	Blue Cocci

Suggested Controls *(not provided)*

Cytology Smear, Mucus Smear, Fecal Smear.

Uses/Limitations

Not to be taken internally.
For In-Vitro Diagnostic use only.
Histological applications.
Do not use if reagent become cloudy.
Do not use past expiration date.
Use caution when handling reagent.
Non-Sterile.

Storage

Store at room temperature (18-25°C).

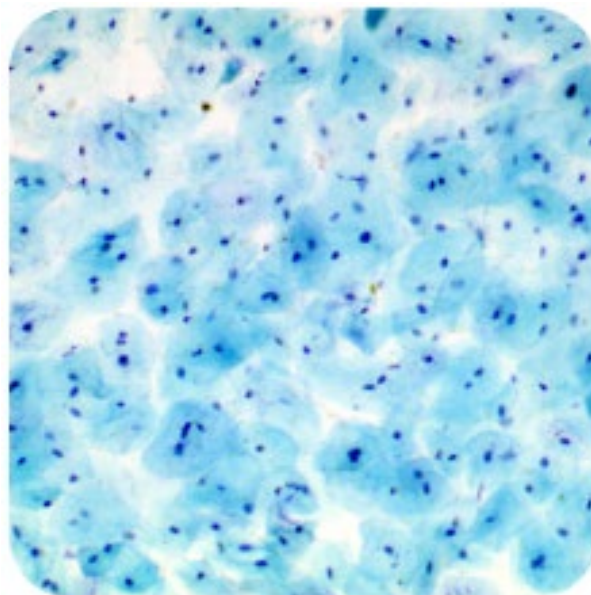
Safety and Precautions

Please see current Safety Data Sheets (SDS) for this product and components GHS classification, pictograms, and full hazard/precautionary statements.

Procedure


1. Deparaffinize sections if necessary and hydrate to distilled water.
2. Apply adequate Methylene Blue Solution to completely cover tissue section and incubate for 1-3 minutes.
3. Rinse slide using absolute alcohol.
4. Dehydrate in 2 changes of absolute alcohol.
5. Clear, and mount in synthetic resin.

Alternative: After staining, rinse briefly in distilled water (2-3 dips), allow slide to air dry, clear in xylene or xylene replacement, and mount in synthetic resin.



References

1. Clark G., et al. Staining Procedures, 4th Edition. Williams & Wilkins, Baltimore, MD. Pages 380-381, 1981.
2. Misra, V., Misra, S.P., Dwivedi, M., Gupta, S.C. The Loeffler's methylene blue stain: an inexpensive and rapid method for detection of *Helicobacter pylori*. *Journal of Gastroenterology and Hepatology*. Sept.-Oct. 1994, volume 9(5): pages 512-513.

 ScyTek Laboratories, Inc.
205 South 600 West
Logan, UT 84321
U.S.A.



EC REP

Emergo Europe
Westervoortsedijk 60
6827 AT Amhem, The Netherlands