



Instructions For Use

LAM-IFU

205 South 600 West Logan, Utah 84323, U.S.A. – Tel. (800) 729-8350 – Tel. (435) 755-9848 – Fax (435) 755-0015 – www.scytek.com Rev. 2, 5/16/2024

Lieb's Crystal Violet for Amyloid

Description and Principle

The use of Crystal Violet for metachromatically staining amyloid was published in 1947 by Ethel Lieb. This stain utilizes a water-reliant metachromatic staining reaction giving reddish amyloid with a blue background. A water-based mounting medium is required to retain permanence of red amyloid coloring.

Expected Results

Amyloid: Reddish Violet
Background: Blue Violet

Suggested Controls (not provided)

Tissue containing amyloid, freshly cut at 5-10µm

Uses/Limitations

Not to be taken internally.
For Research Use Only.
Histological applications.
Do not use if reagent become cloudy.
Do not use past expiration date.
Use caution when handling reagent.
Non-Sterile.

Storage

Store at room temperature (18-25°C).

Safety and Precautions

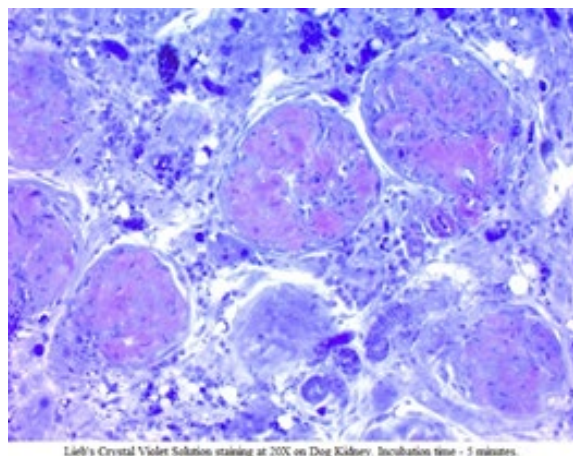
Please see current Safety Data Sheets (SDS) for this product and components GHS classification, pictograms, and full hazard/precautionary statements.

Notes: When it is suspected that the amount of amyloid might be small, as in hyalinized islets of Langerhans, thicker sections should be cut in order to render the color reaction readily visible.

Lieb's Crystal Violet does not stain all types of amyloid as well as Congo red. Lieb's Crystal violet usually better demonstrates amyloid in heart muscle than Congo red.

Procedure

1. Deparaffinize tissue and hydrate to water if needed.
2. Apply Lieb's Crystal Violet for 5 minutes.
3. Rinse excess stain from slide with deionized water.
4. Mount in Apathy's mounting media, or Buffered Glycerol Mounting Medium (Product ID: GMM)



Lieb's Crystal Violet Solution staining at 20X on Dog Kidney. Incubation time - 5 minutes.

References

1. LIEB E. Permanent stain for amyloid. Am J Clin Pathol. 1947 May;17(5):413



ScyTek Laboratories, Inc.
205 South 600 West
Logan, UT 84321
U.S.A.