



Instructions For Use

CEA-IFU

205 South 600 West Logan, Utah 84323, U.S.A. – Tel. (800) 729-8350 – Tel. (435) 755-9848 – Fax (435) 755-0015 – www.scytek.com Rev. 5, 5/16/2024

Cresyl Echt Violet Solution (0.1%)

Description and Principle

Cresyl Echt Violet Solution (0.1%) is designed for staining Nissl substance in neurons on formalin fixed, paraffin-embedded tissue. Nissl granules are purple, nuclei of neuroglia and endothelial cells are slightly bluer than Nissl granules.

Expected Results

Nissl Substance: Violet
Neuroglia Nuclei: Violet to Dark Blue

Kit Contents

Additional Kit Reagents Sold Separately

1. Cresyl Echt Violet Solution	2-8° C
2. Luxol Fast Blue Solution	18-25°C
3. Lithium Carbonate Solution (0.05%)	18-25°C
4. Alcohol, Reagent (70%)	18-25°C

Storage

Suggested Controls (not provided)

Cerebral Cortex

Uses/Limitations

Not to be taken internally.
For In-Vitro Diagnostic use only.
Histological applications.
Do not use if reagent become cloudy.
Do not use past expiration date.
Use caution when handling reagent.
Non-Sterile.

Storage

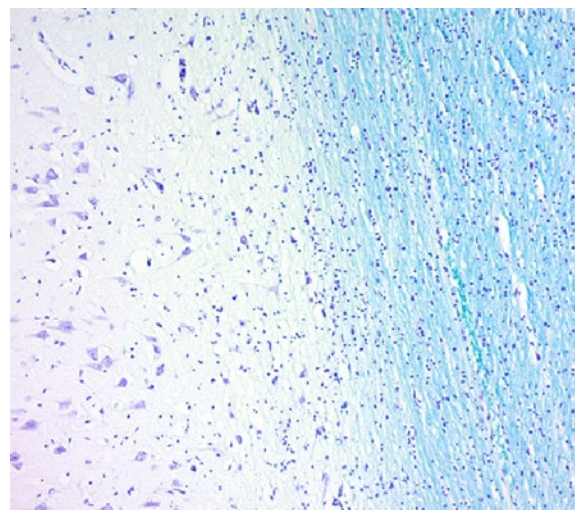
Store at 2-8°C.

Safety and Precautions

Please see current Safety Data Sheets (SDS) for this product and components GHS classification, pictograms, and full hazard/precautionary statements.

Procedure

1. Deparaffinize sections if necessary and hydrate to distilled water.
2. Pour Luxol Fast Blue Solution into a staining jar and incubate slide for 24 hours at room temperature or 2 hours at 60°C. Solution is alcoholic and will readily evaporate at smaller volumes.
3. Rinse thoroughly in distilled water.
4. Differentiate section by dipping in Lithium Carbonate Solution (0.05%) several times (up to 20 seconds).
5. If needed, continue differentiation by repeatedly dipping in Alcohol, Reagent (70%) until gray-matter is colorless and white-matter remains blue.
6. Rinse slide in 2 changes of distilled water.
7. Incubate slide in Cresyl Echt Violet (0.1%) for 2-5 minutes.




White-matter and gray-matter of Human Brain stained with Luxol Fast Blue Stain Kit

8. Rinse quickly in 1 change of distilled water.
9. Dehydrate quickly in 3 changes of absolute alcohol.
10. Clear as desired and mount in synthetic resin.

References

1. Sheenan, D.C., Hrapchak, B.B. Theory and Practice of Histotechnology, 2nd Edition. Battelle Press, Columbus, OH. Page 262-264. 1980
2. Kluver, H., Barrera, E.A. A Method for the combined staining of cells and fibers in the nervous system. Journal of Neuropathology and Experimental Neurology, 1953, 12: pages 400-403.
3. Margaret M. Powers & George Clark (1955) An Evaluation of Cresyl Echt Violet Acetate as a Nissl Stain, Stain Technology, 30:2, 83-88.

 ScyTek Laboratories, Inc.
205 South 600 West
Logan, UT 84321
U.S.A.




Emergo Europe
Westervoortsedijk 60
6827 AT Arnhem, The Netherlands