



Instructions For Use

BCS-IFU-RUO

205 South 600 West Logan, Utah 84323, U.S.A. – Tel. (800) 729-8350 – Tel. (435) 755-9848 – Fax (435) 755-0015 – www.scytek.com Rev. 3, 5/16/2024

Brilliant Cresyl Blue (1.5% in 0.85% Saline)

Description and Principle

Brilliant Cresyl Blue (1.5% in 0.85% Saline) is a supravital hematology stain for counting reticulocytes in peripheral blood smears. The number of reticulocytes in the blood is a simple measure of erythropoietic performance. Reticulocytes are immature erythrocytes that contain nuclear remnants of basophilic ribonucleoproteins which decreases as the reticulocyte matures. When stained, reticulocytes appear to contain dark blue granules or filaments.

Expected Results

Reticulocytes:	Blue/Green with Dark Blue Granules.
Erythrocytes:	Blue/Green
Leukocyte:	Light Blue

Suggested Controls (not provided)

Blood

Uses/Limitations

Not to be taken internally.
For Research Use Only.
Histological applications.
Do not use if reagent precipitates.
Do not use past expiration date.
Use caution when handling reagents.
Non-Sterile.

Storage

Store at room temperature (18-25°C).

Safety and Precautions

Please see current Safety Data Sheets (SDS) for this product and components GHS classification, pictograms, and full hazard/precautionary statements.

Working Solution Notes:

- Brilliant Cresyl Blue (1.5% in 0.85% Saline) may be used as is or diluted with physiological saline (0.85% w/v saline in deionized water) to suit staining intensity preferences. Working diluted stain should be used right away.

- Physiological saline solution: Add 8.5g of Sodium chloride to 1L deionized water.

- Filter solution before use if excess stain precipitate is seen.

Procedure (Glass Tube)

1. Pipette a volume of Brilliant Cresyl Blue in the bottom of a glass tube followed by an equal volume of uncoagulated blood and mix well..

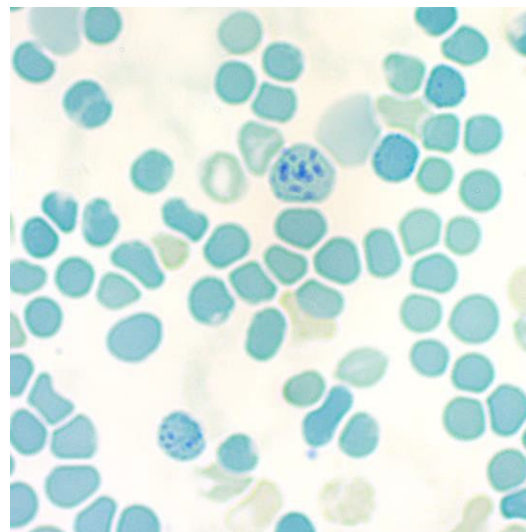
2. Incubate mixture for 5-15 minutes in a warm water bath.

3. Mix well prior to preparing smear.

4. Prepare 2-3 glass slide smears and let dry.

5. Clear slide and mount in synthetic resin

6. Count per standard procedure



Procedure (Glass Slide)

1. Pipette a volume of Brilliant Cresyl Blue in the bottom of a glass slide followed by an equal volume of uncoagulated blood and mix well.

2. Place immediately in a warm humidity chamber and incubate mixture for 5-15 minutes.

3. Mix well prior to preparing smear.

4. Prepare smear and let dry.

5. Clear slide and mount in synthetic resin.

6. Count per standard procedure



ScyTek Laboratories, Inc.
205 South 600 West
Logan, UT 84321
U.S.A.