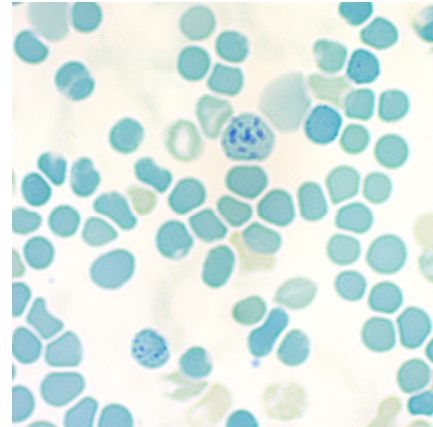


# Brilliant Cresyl Blue (1.5% in 0.85% Saline)

**Description:** Brilliant Cresyl Blue (1.5% in 0.85% Saline) is a supravital hematology stain for counting reticulocytes in peripheral blood smears. The number of reticulocytes in the blood is a simple measure of erythropoietic performance. Reticulocytes are immature erythrocytes that contain nuclear remnants of basophilic ribonucleoproteins which decreases as the reticulocyte matures. When stained, reticulocytes appear to contain dark blue granules or filaments.

Reticulocytes: Blue/Green with Dark Blue Granules.  
Erythrocytes: Blue/Green  
Leukocyte: Light Blue

**Uses/Limitations:** Not to be taken internally.  
For Research Use Only.  
Histological applications.  
Do not use if reagent precipitates.  
Do not use past expiration date.  
Use caution when handling reagents.  
Non-Sterile.



**Control Tissue:** Blood

**Ordering Information and Current Pricing at [www.scytek.com](http://www.scytek.com)**


Availability:	Item #	Volume
	BCS500	500ml
	BCS999	1000ml
	BCS3800	1 Gallon

**Precautions:** Avoid contact with skin and eyes.  
Harmful if swallowed.  
Follow all Federal, State, and local regulations regarding disposal.

**Procedure (Glass Tube):**

1. Pipette a volume of Brilliant Cresyl Blue in the bottom of a glass tube followed by an equal volume of uncoagulated blood and mix well.
2. Incubate mixture for 5-15 minutes in a warm water bath.
3. Mix well prior to preparing smear.
4. Prepare 2-3 glass slide smears and let dry.
5. Clear slide and mount in synthetic resin.

Storage: 18° C  25° C


 ScyTek Laboratories, Inc.  
205 South 600 West  
Logan, UT 84321  
U.S.A.


CE

EC REP  
Emergo Europe  
Prinsessegracht 20  
2514 AP The Hague, The Netherlands

### Procedure (Glass Slide):

1. Pipette a volume of Brilliant Cresyl Blue in the bottom of a glass slide followed by an equal volume of uncoagulated blood and mix well.
2. Place immediately in a warm humidity chamber and incubate mixture for 5-15 minutes.
3. Mix well prior to preparing smear.
4. Prepare smear and let dry.
5. Clear slide and mount in synthetic resin.

Storage: 18° C  25° C

 ScyTek Laboratories, Inc.  
205 South 600 West  
Logan, UT 84321  
U.S.A.

**CE**

EC REP

Emergo Europe  
Prinsessegracht 20  
2514 AP The Hague, The Netherlands