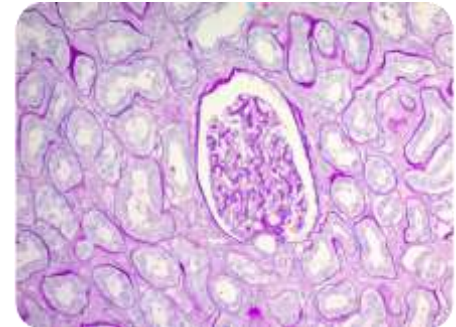


## Periodic Acid Schiff (PAS) Stain Kit (Modified Lillie's)

**Description:** *The Periodic Acid Schiff (PAS) Stain Kit is intended for use in histological demonstration of lymphocytes and mucopolysaccharides. The staining pattern of the lymphocytes are helpful in making therapeutic decisions in established cases of lymphocytic leukemia. The PAS reaction in tissue sections is useful for the demonstration of mucopolysaccharides. PAS staining may also be used for the demonstration of fungal organisms in tissue sections.*

PAS Positive Material: *Magenta*  
Nuclei: *Black/Blue*

**Uses/Limitations:** *Not to be taken internally.  
For In-Vitro Diagnostic use.  
Histological applications.  
Do not use if reagents become cloudy.  
Do not use past expiration date.  
Use caution when handling reagents.  
Non-Sterile.*



**Control Tissue:** *Kidney  
Intestine  
Liver*


**Ordering information regarding individual components on back page!**

**Kit Contents:**

<u>Item #</u>	<u>Kit Contents</u>	<u>Volume</u>	<u>Storage</u>
PAQ030	Periodic Acid Solution	30 ml	2-8° C
SRF030	Schiff's Solution	30 ml	2-8° C
HMM030	Hematoxylin, Mayer's	30 ml	18-25°C
BRT030	Bluing Reagent	30 ml	18-25°C


**Precautions:** *Avoid contact with skin and eyes.  
Harmful if swallowed.  
Follow all Federal, State, and local regulations regarding disposal.*

**Procedure:**

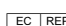
Storage: 2° C  25° C

**Mixed Storage Conditions.  
Separate Contents.**

Doc: IFU-TemplateMixedStorageev2

 ScyTek Laboratories, Inc.  
205 South 600 West  
Logan, UT 84321  
U.S.A.



 EmergoEurope (31)(0) 70 345-8570  
Molsnstraat 15  
2513 BH Hague, The Netherlands

1. *Deparaffinize sections if necessary and hydrate to distilled water.*
2. *If sections are Zenker-fixed, remove mercuric chloride crystals using iodine and clear with sodium thiosulfate. Rinse in running tap water.*
3. *Apply 5-10 drops of Periodic Acid Solution to tissue section and incubate for 5 minutes. Note: If a darker staining intensity is preferred, incubate for 10 minutes.*
4. *Rinse slide in 4 changes of distilled water.*
5. *Apply 5-10 drops of Schiff's Solution to tissue section and incubate for 15 minutes. Note: if a darker staining intensity is preferred, incubate for 30 minutes.*
6. *Rinse slide in hot running tap water for 5 minutes. If crystals from Schiff's Soltuion remain, continue rinsing directly under warm tap water until crystals are no longer visible.*
7. *Rinse slide in distilled water.*
8. *Apply 5-10 drops of Mayer's Hematoxylin to tissue section and incubate for 1 minute.*
9. *Rinse slide in running tap water for 2 minutes.*
10. *Apply 5-10 drops of Bluing Reagent for 10 seconds.*
11. *Rinse in distilled water.*
12. *Dehydrate through graded alcohols.*
13. *Clear, and mount in synthetic resin.*


*Note: If a darker staining intensity is preferred, incubate for 10 minutes).*

**References:**

1. Culling CFA, Allison RT, Barr WT.: *Cellular Pathology Technique, 4<sup>th</sup> Edition.* Butterworths, Pages 216-220, 1985.
2. Sheenan, D.C., Hrapchak, B.B. *Theory and Practice of Histotechnology, 2<sup>nd</sup> Edition.* CV Mosby, Columbus, OH. Pages 164-167, 1980.


**Bulk Reagent Ordering Information and Current Pricing at [www.scytek.com](http://www.scytek.com)**

Description:	Catalog #	Volume
Periodic Acid Solution	PAQ250	250 ml
	PAQ500	500 ml
	PAQ999	1000 ml
Schiff's Solution	SRF250	250 ml
	SRF500	500 ml
	SRF999	1000 ml
Hematoxylin, Mayer's (Lillie's)	HMM500	500 ml
	HMM999	1000 ml
	HMM3800	1 Gallon
Bluing Reagent	BRT500	500 ml
	BRT999	1000 ml
	BRT3800	1 Gallon

Storage: 2° C  25° C

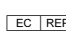
**Mixed Storage Conditions.  
Separate Contents.**

Doc: IFU-TemplateMixedStorageev2



ScyTek Laboratories, Inc.  
205 South 600 West  
Logan, UT 84321  
U.S.A.



 EmergoEurope (31)(0) 70 345-8570  
Molsnstraat 15  
2513 BH Hague, The Netherlands