


beta-Catenin (p120); Rabbit Polyclonal (Concentrate)

Availability/Contents:	<u>Item #</u>	<u>Volume</u>
	RA0104-C.5	0.5 ml

Description:

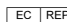
Species:	Rabbit
Immunogen:	A synthetic peptide from the middle of beta-Catenin (p120) protein
Clone:	Polyclonal
Isotype:	IgG
Entrez Gene ID:	1499 (Human)
Hu Chromosome Loc.:	3p22.1
Synonyms:	Cadherin associated protein, beta 1 88kDa, Catenin beta-1, CATNB, CHBCAT, CTNNB1
Mol. Weight of Antigen:	92kDa
Format:	200µg/ml of Ab purified from rabbit anti-serum by Protein A. Prepared in 10mM PBS with 0.05% BSA & 0.05% azide.
Specificity:	Immuno-staining of beta-catenin and E-cadherin is helpful in the accurate identification of ductal and lobular neoplasms, including a distinction between low-grade ductal carcinoma in situ (DCIS) and lobular carcinoma. Additionally, some rectal and gastric adenocarcinomas demonstrate diffuse cytoplasmic beta-catenin staining and a lack of membranous staining, mimicking the staining pattern observed with lobular breast carcinomas.
Background:	Beta-catenin associates with the cytoplasmic portion of E-cadherin, which is necessary for the function of E-cadherin as an adhesion molecule. In normal tissues, beta-catenin is localized to the membrane of epithelial cells, consistent with its role in the cell adhesion complex. In breast ductal neoplasia, beta-catenin is usually localized in cellular membranes. However, in lobular neoplasia, a marked redistribution of beta-catenin throughout the cytoplasm results in a diffuse cytoplasmic pattern.
Species Reactivity:	Human and Mouse. Others not known.
Positive Control:	HeLa or MCF-7 cells. Breast carcinoma.
Cellular Localization:	Cell surface and cytoplasmic
Titer/ Working Dilution:	Immunohistochemistry (Frozen and Formalin-fixed): 0-2 µg/ml Flow Cytometry: 0.5-1 µg/million cells Immunofluorescence: 1-2 µg/ml Western Blotting: 0.5-1 µg/ml Immunoprecipitation: 1-2 µg/500µg protein lysate
Microbiological State:	This product is not sterile.

Storage: 2° C  8° C

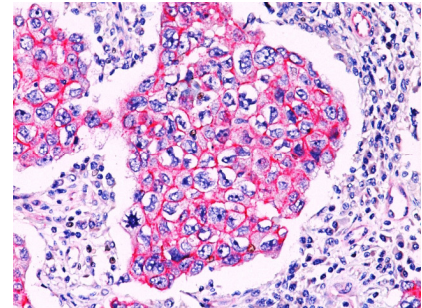


ScyTek Laboratories, Inc.
 205 South 600 West
 Logan, UT 84321
 U.S.A.



 EmergoEurope (31)(0) 70 345-8570
 Molsnstraat 15
 2513 BH Hague, The Netherlands

Uses/Limitations: Not to be taken internally.
 For Research Use Only.
 This product is intended for qualitative immunohistochemistry with normal and neoplastic formalin-fixed, paraffin-embedded tissue sections, to be viewed by light microscopy.
 Do not use if reagent becomes cloudy.
 Do not use past expiration date.
 Non-Sterile.



Ordering Information and Current Pricing at www.scytek.com

Formalin-paraffin breast ductal carcinoma stained with beta-Catenin (p120); Rabbit Polyclonal. Note membrane staining in ductal carcinoma.

Procedure:

1. **Tissue Section Pretreatment (Required):** Staining of formalin fixed, paraffin embedded tissue sections is significantly enhanced by pretreatment with EDTA Buffer (10X) HIER Solution (pH 8.0) (ScyTek catalog# ETA).
2. **Primary Antibody Incubation Time:** We suggest an incubation period of 30 minutes at room temperature. However, depending upon the fixation conditions and the staining system employed, optimal incubation should be determined by the user.
3. **Visualization:** For maximum staining intensity we recommend the “UltraTek HRP Anti-Polyvalent Lab Pack” (ScyTek catalog# UHP125, see IFU for instructions) combined with the “DAB Chromogen/Substrate Bulk Pack (High Contrast)” (ScyTek catalog# ACV500, see IFU for instructions).

Precautions:

Contains Sodium Azide as a preservative (0.09% w/v).
 Do not pipette by mouth.
 Avoid contact of reagents and specimens with skin and mucous membranes.
 Avoid microbial contamination of reagents or increased nonspecific staining may occur.
 This product contains no hazardous material at a reportable concentration according to U.S. 29 CFR 1910.1200, OSHA Hazardous Communication Standard and EC Directive 91/155/EC.


References:

1. Dabbs DJ et. al. Am J Surg Path. 2007;31:427-437.
2. Sarrío D et. al. Oncogene. 2004;23:3272-3283.
3. Mastracci TL et. al. Mod Path. 2005;18:741-751.

Warranty:

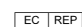
No products or “Instructions For Use (IFU)” are to be construed as a recommendation for use in violation of any patents. We make no representations, warranties or assurances as to the accuracy or completeness of information provided on our IFU or website. Our warranty is limited to the actual price paid for the product. ScyTek Laboratories, Inc. is not liable for any property damage, personal injury, time or effort or economic loss caused by our products. Immunohistochemistry is a complex technique involving both histological and immunological detection methods. Tissue processing and handling prior to immunostaining can cause inconsistent results. Variations in fixation and embedding or the inherent nature of the tissue specimen may cause variations in results. Endogenous peroxidase activity or pseudoperoxidase activity in erythrocytes and endogenous biotin may cause non-specific staining depending on detection system used.

Storage: 2° C  8° C



ScyTek Laboratories, Inc.
 205 South 600 West
 Logan, UT 84321
 U.S.A.



 EmergoEurope (31)(0) 70 345-8570
 Molsnstraat 15
 2513 BH Hague, The Netherlands