

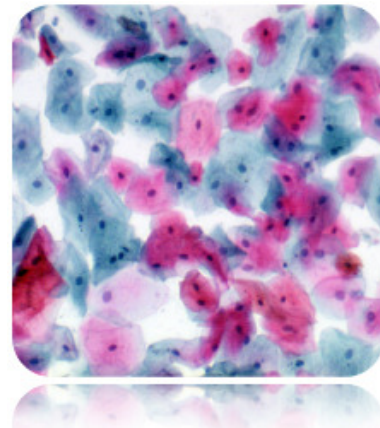
# Papanicolaou (PAP) Stain Kit

**Description:** The Papanicolaou (PAP) Stain Kit is designed to differentiate between a variety of cells in vaginal smears for detection of vaginal, uterine and cervical cancer. In addition, this procedure is valuable for staining a variety of other bodily secretions and cell smears. The procedure was developed in the early 1940's by George Papanicolaou.

Nuclei:	Blue
High Keratin Cells:	Orange
Superficial Cells:	Pink
Erythrocytes:	Dark Pink
Parabasal Cells:	Blue/Green
Intermediate Cells:	Blue/Green
Metaplastic Cells:	May contain both Blue/Green and Pink.

**Uses/Limitations:** Not to be taken internally.  
 For In-Vitro Diagnostic use only.  
 Histological applications.  
 Do not use if reagents become cloudy.  
 Do not use past expiration date.  
 Use caution when handling reagents.  
 Non-Sterile.

**Control Tissue:** Gynecological Smear.  
 Any Superficial Cell Smear.




**Ordering information regarding individual components on back page!**

**Kit Contents:**

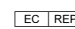
<u>Item #</u>	<u>Components</u>	<u>Volume</u>	<u>Storage</u>
HMM500	Hematoxylin, Mayer's (Lillie's Modification)	500 ml	18-25 °C
OGA500	OG-6 Solution	500 ml	18-25 °C
EAC500	EA-50 Stain Solution	500 ml	18-25 °C

**Precautions:** Avoid contact with skin and eyes.  
 Harmful if swallowed.  
 Follow all Federal, State, and local regulations regarding disposal.

Storage: 18° C  25° C

 ScyTek Laboratories, Inc.  
 205 South 600 West  
 Logan, UT 84321  
 U.S.A.

 EmergoEurope (31)(0) 70 345-8570  
 Molsnstraat 15  
 2513 BH Hague, The Netherlands

**Procedure:**


1. Place slide in 95% alcohol for 5 minutes.
2. Place slide in 70% alcohol for 5 minutes.
3. Place slide in distilled water for 2 minutes.
4. Apply adequate Hematoxylin, Mayer's (Lillie's Modification) to completely cover cell smear and incubate for 5 minutes.
5. Rinse slide 1 time in distilled water to remove excess stain.
6. Rinse slide in tap water for 2 minutes..
7. Rinse slide in 2 changes of distilled water.
8. Dip slide several times in 95% alcohol and blot excess off.
9. Apply adequate OG-6 Stain Solution to completely cover cell smear to excess and incubate for 2 minutes.
10. Rinse slide gently using absolute alcohol.
11. Apply adequate EA-50 Stain Solution to completely cover cell smear to excess and incubate for 3 minutes.
12. Rinse slide gently using absolute alcohol.
13. Quickly dehydrate slide in 3 changes of absolute alcohol.
14. Clear slide and mount in synthetic resin.


**References:**

1. Papanicolaou, G.N. Atlas of Exfoliative Cytology, Harvard University Press, Cambridge, 1954.

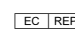
**Bulk Reagent Ordering Information and Current Pricing at [www.scytek.com](http://www.scytek.com)**

Description:	Catalog #	Volume
Hematoxylin, Mayer's (Lillie's Modification)	HMM500	500 ml
	HMM999	1000 ml
	HMM3800	1 Gallon
OG-6 Solution	OGA500	500 ml
	OGA999	1000 ml
	OGA3800	1 Gallon
EA-50 Stain Solution	EAC500	500 ml
	EAC999	1000 ml
	EAC3800	1 Gallon

Storage: 18° C  25° C

 ScyTek Laboratories, Inc.  
205 South 600 West  
Logan, UT 84321  
U.S.A.



 EmergoEurope (31)(0) 70 345-8570  
Molsnstraat 15  
2513 BH Hague, The Netherlands