

## Light Green Solution

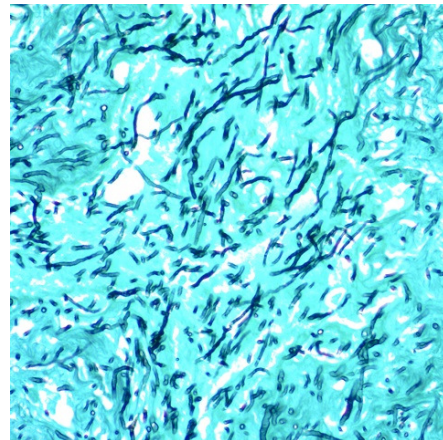
**Description:** Light Green Solution is intended for use in histological applications as a general counterstain. When used correctly, various shades of green can be obtained to aid in visualization of tissue components.

Cytoplasm: Green  
Nuclei: Green

**Uses/Limitations:** Not to be taken internally.  
For In-Vitro Diagnostic use.  
Histological applications.  
Do not use if reagents become cloudy.  
Do not use past expiration date.  
Use caution when handling reagents.  
Non-Sterile.

**Control Tissue:** Any fixed or frozen tissue.  
Cell Smear.  
Cytocentrifuge.

**Ordering Information and Current Pricing at [www.scytek.com](http://www.scytek.com)**



Lung tissue containing fungal material. Using Light Green Solution as a counterstain to GMS Silver Stain. 400X Magnification.


**Availability:**


<u>Item #</u>	<u>Volume</u>	<u>Storage</u>
LGA030	30 ml (Dropper)	18-25°C
LGA125	125 ml	
LGA500	500 ml	
LGA999	1000 ml	
LGA3800	1 Gallon	

**Precautions:** Avoid contact with skin and eyes.  
Harmful if swallowed.  
Follow all Federal, State, and local regulations regarding disposal.

**Procedure:**

1. Deparaffinize sections if necessary and hydrate to distilled water.
2. Rinse slide in distilled water.
3. Stain slide in Light Green Solution for 2 minutes.
4. Rinse slide using absolute alcohol.
5. Dehydrate in 2 changes of absolute alcohol, clear, and mount in synthetic resin.

Storage: 18° C  25° C

 ScyTek Laboratories, Inc.  
205 South 600 West  
Logan, UT 84321  
U.S.A.

CE

EC REP  
Emergo Europe  
Prinsessegracht 20  
2514 AP The Hague, The Netherlands