

Brilliant Cresyl Blue (0.3%, Alcoholic)

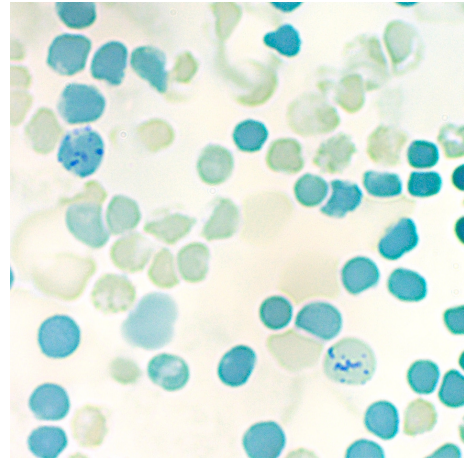
Description: Brilliant Cresyl Blue (0.3%, alcoholic) is a supravital hematology stain for counting reticulocytes in peripheral blood smears. The number of reticulocytes in the blood is a simple measure of erythropoietic performance. Reticulocytes are immature erythrocytes that contain nuclear remnants of basophilic ribonucleoproteins which decreases as the reticulocyte matures. When stained, reticulocytes appear to contain dark blue granules or filaments.

Reticulocytes: Blue/Green with Dark Blue Granules.
 Erythrocytes: Blue/Green
 Leukocytes: Light Blue

Uses/Limitations: Not to be taken internally.
 For Research Use Only.
 Hematologic applications.
 Do not use if reagents become cloudy.
 Do not use past expiration date.
 Use caution when handling reagents.
 Non-Sterile.


Control Tissue: Blood


Ordering Information and Current Pricing at www.scytek.com

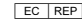


Availability:	<u>Item #</u>	<u>Volume</u>
	BCA500	500 ml
	BCA999	1000 ml
	BCA3800	1 Gallon

Precautions: Avoid contact with skin and eyes.
 Flammable.
 Harmful if swallowed.
 Follow all Federal, State, and local regulations regarding disposal.

Storage: 18° C  25° C

 ScyTek Laboratories, Inc.
 205 South 600 West
 Logan, UT 84321
 U.S.A.

CE

 Emergo Europe
 Prinsessegracht 20
 2514 AP The Hague, The Netherlands

Procedure:

1. On a clean slide, apply a volume of Brilliant Cresyl Blue (0.3%, Alcoholic) and allow to dry.

Note 1: Volume of stain should be 2-6 times the volume of blood applied.

2. On a second clean slide or coverslip, place a drop of blood and bring in contact with dried stain.

3. Carefully move slides (hinge fashion) until all of the stain and blood are completely mixed and appear blue/black in color.


4. Allow slides to rest flat against each other to spread the stained blood into a thin film.


5. Separate slides and allow films to dry.

6. Check microscopically for adequate staining.

7. Clear slide and mount in synthetic resin.

Note 2: If erythrocytes are not a blue/green color and reticulocytes do not exhibit dark blue granules, increase the ratio of stain to blood.

Storage: 18° C  25° C



ScyTek Laboratories, Inc.
205 South 600 West
Logan, UT 84321
U.S.A.



EC REP

Emergo Europe
Prinsessegracht 20
2514 AP The Hague, The Netherlands